



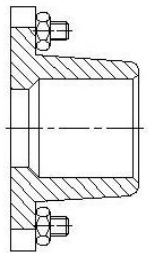
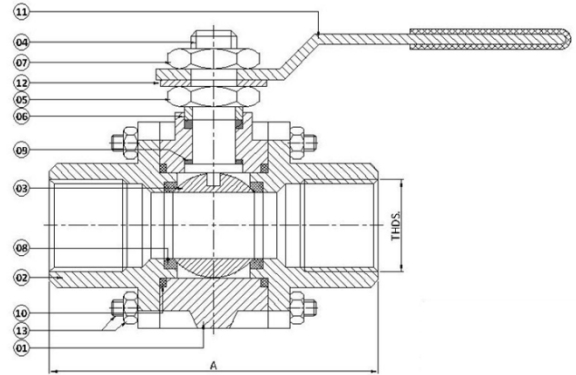
FORGED STEEL BALL VALVE CLASS-800#

Technical Detail

Manufacturing Std ; BS:5351/API:602 / IS:9890
 Testing & Inspection Std : API:598
 Face to Face : As per ANSI B 16.10
 End Connection : Screwed Ends to (BSP, BSP-T & NPT) & Socket Weld
 Socket Weld & Threaded to : ANSI B 16.11 / ANSI B 1.20.1

Design Features

Wall thickness complies with ASME B16.34 Class 1500#
 Strain Hardened Stainless Steel Stem
 Memory Seal Seats Compensate automatically for wear and fluctuations of pressure and temperature
 Blow Out Proof Stem
 Solid cup and cone type PTFE Stem Seal- Adjustable
 Stem bearing in Gland nut reduces Side thrust effect.
 Live-loaded thrust washer prevents galling and provides a secondary stem seal
 RPTFE stem washer prevents galling, reduces torque and provides secondary seal
 Stem grounded against body
 Handle with safety clip (Optional)
 Optional oval or high-leverage hand wheels



Socket Weld End

Material Detail

Part No.	Part Name	A105	F304	F316	F304L	F316L
01	Body	ASTM A 105	ASTM A 182 Gr. F304	ASTM A 182 Gr. F316	ASTM A 182 Gr. F304L	ASTM A 182 Gr. F316L
02	Side Piece	ASTM A 105	ASTM A 182 Gr. F304	ASTM A 182 Gr. F316	ASTM A 182 Gr. F304L	ASTM A 182 Gr. F316L
03	Ball	AISI 304 / AISI 316 / S.S.304 / S.S.316				
04	Stem	AISI 304 / AISI 316 / S.S.304 / S.S.316				
05	Gland Nut	AISI 304 / AISI 316 / S.S.304 / S.S.316				
06	Gland Bush	AISI 304 / AISI 316 / S.S.304 / S.S.316				
07	Lock Nut	AISI 304 / AISI 316 / S.S.304 / S.S.316				
08	Seat Ring	PTFE / RPFE / VITON / EPDM (on Request)				
09	Stem Seal	PTFE / RPFE / VITON / EPDM (on Request)				
10	Body Sealant Ring	PTFE / RPFE / VITON / EPDM (on Request)				
11	Wrench	S.S. / M.S. / C.S.				
12	Stop	AISI 304 / AISI 316 / S.S.304 / S.S.316				
13	Stud & Nut	AISI 304 / AISI 316 / S.S.304 / S.S.316				

Primary Services Rating & Test Pressure				
Class	Working Pressure	Hyd. Test Pressure		
		Body	Seat	Temp.
800	800 PSIG	3000 PSIG	2000 PSIG	200°F
Air Test : Seat 80 PSIG ±10 PSIG				